

SL talk For  
SEC 3 Parents



## Overview

### 1. School Leaders' talk

by Mrs Celine Wong, Vice-Principal (Student Development)

### 3. Sec 3 Outdoor Adventure Camp

by Ms O Ming Fen, SH Student Leadership and  
Mr Ahmad Lufti, Camp Chief

### 2. Sec 3 School Experience

by Mrs Tan Cailing, Year Head (Upper Sec)

### 4. Interaction with Form Teachers

by Sec 3 Form Teachers

# School Leaders' Talk for Sec 3 Parents

10 Feb 2023



## Introductions – School Leaders

*Principal – Ms Sandra Gwee*

*Vice-Principal (Student Development) – Mrs Celine Wong*

*Vice-Principal (Teaching & Learning) – Mrs Catherine Chan*



## Introductions (Key Personnel)

*Mrs Tan Cailing – Year Head (Upper Sec)*

*Ms Seng Pei Sze – HOD CCE*

*Mr Tan Kheng Wee – HOD Craft & Tech*

*Mdm Teh Sieu Ching – HOD MTL*

*Mr Sivagnanam Rameswaran – HOD PE, CCA & Aesthetic*

*Ms Chiang Wai Kit – SH CCE*

*Ms Shirlynn Khoo – SH Maths*

*Ms O Ming Fen – SH Student Leadership*

*Mdm Anggreini – SH Aesthetic (covering)*



## Introductions - Sec 3 FTs

- *21-3A: Mdm Anggreini & Mr Ramachandran*
- *21-3B: Mrs Eleanor Chen & Ms Hannah Twoon*
- *21-3C: Mr Sim Chow Meng & Ms Seng Pei Sze*
- *21-3D: Mr Beh Yong Hua & Mrs Magdalena Sii*
- *21-3E: Mr Joo Chan Hock & Ms Jasmine Tan*
- *21-3F: Ms Chiang Wai Kit & Mr Roland Chan*
- *21-3G: Ms Susanna Wee & Mr Carson Huang*





# Hua Yi Student Outcomes

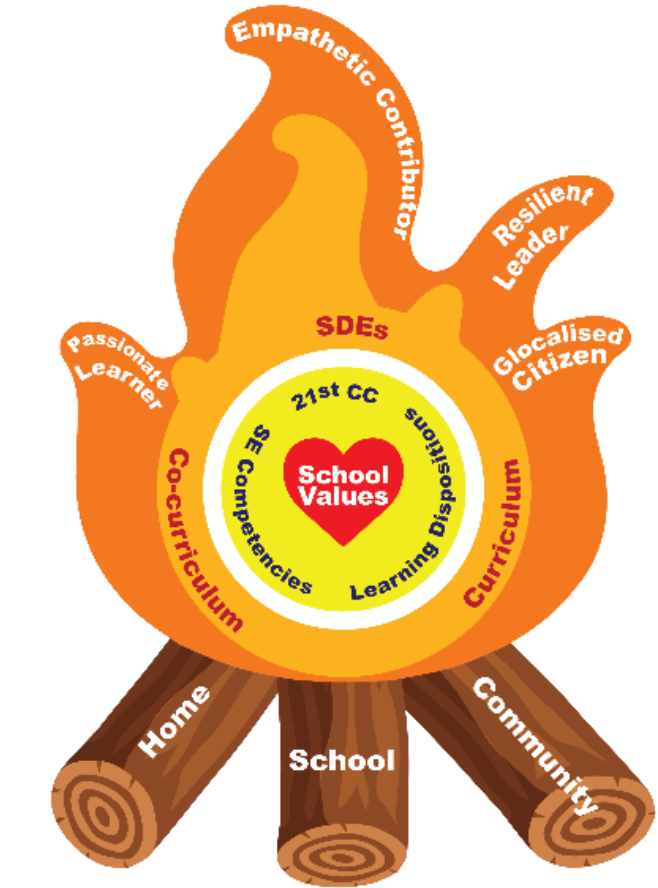
We aim to develop Hua Yians to be:

- 1) **Passionate Learners**, who take responsibility for their own learning and are motivated to be life-long learners;
- 2) **Resilient Leaders**, who have the courage and flexibility to make difficult decisions in the best interest of others;
- 3) **Empathetic Contributors**, who demonstrate the willingness to help others by stepping forward to make a difference; and
- 4) **Glocalised Citizens** who actively pursue understanding of contemporary trends and issues to stay rooted to Singapore and relevant to the world.



## Hua Yi's brand of Education

- Hua Yi's brand of education focuses on holistic student development, and we have developed a Total Curriculum which provides platforms for student development in all domains – physical, intellectual, moral, socio-emotional, aesthetics and leadership.
- Intents and purposes of programmes – to promote joy in learning; to learn for life; to make a difference to others.





## Blended Learning in Hua Yi (ILD)

- Every Friday on even weeks, students will go through Independent Learning Day (ILD) which is fully asynchronous.
- Comprises 2 segments:
  - Curriculum Coverage which takes the form of research, collaborative projects, applied learning, utilising iPad
  - Student-Initiated Learning where students pursue interests of their choice in areas such as Music and Drama, Art & Craft, Sports & Fitness, Languages, Botany, Digital Media, etc.
- House-based with teachers as mentors



## House Structure in Hua Yi

- 5 Houses: Altius, Citius, Diutius, Fortius, Latus
- Each class will be assigned to a House. Students will remain in the same class for the 4 years they are in Hua Yi. This is to facilitate social mixing across levels and streams and to enable students to build meaningful friendships.
- Each House is led by a House Advisor, House Master, House Managers and House DM.



# Internationalisation Trips

- Outbound Trip:
  - Bangkok
  - Taiwan
  - Cambodia
- Travel dates: 20 Nov – 24 Nov (Tentative dates)
- Forged bonds with international partners, immersed themselves in cultural learning and carrying out values-in-action projects.



# Highlights for Sec 3

## School-wide events:

- Learning Festival (end of Sem 1 & 2)
- Cross Country: 28 June
- Montage: 7-8 July

## Cohort-wide Programmes:

- Start-it-Right
- Sec 3 Outdoor Adventure Camp (Residential)
- Internationalisation Programme (Bangkok, Taiwan & Cambodia)
- Values-In-Action – application of learning in Lower Sec



## Transition to Upper Sec

- More leadership opportunities
- Greater academic rigour in preparation for national exams in Sec 4
- New subjects, e.g. coursework – need for consistent work





# Communication Channels

- Semestral Letter from School
- School Website: <https://huayisec.moe.edu.sg/>
- Parents' Gateway
- General office: 6563 4568
- School email address: [hyss@moe.edu.sg](mailto:hyss@moe.edu.sg)
- Individual email addresses of FTs, KPs and SLs.

Principal: Ms Sandra Gwee [sandra\\_gwee@schools.gov.sg](mailto:sandra_gwee@schools.gov.sg)

Vice-Principal (Student Devt): Mrs Celine Wong [tan\\_kay\\_bin@schools.gov.sg](mailto:tan_kay_bin@schools.gov.sg)

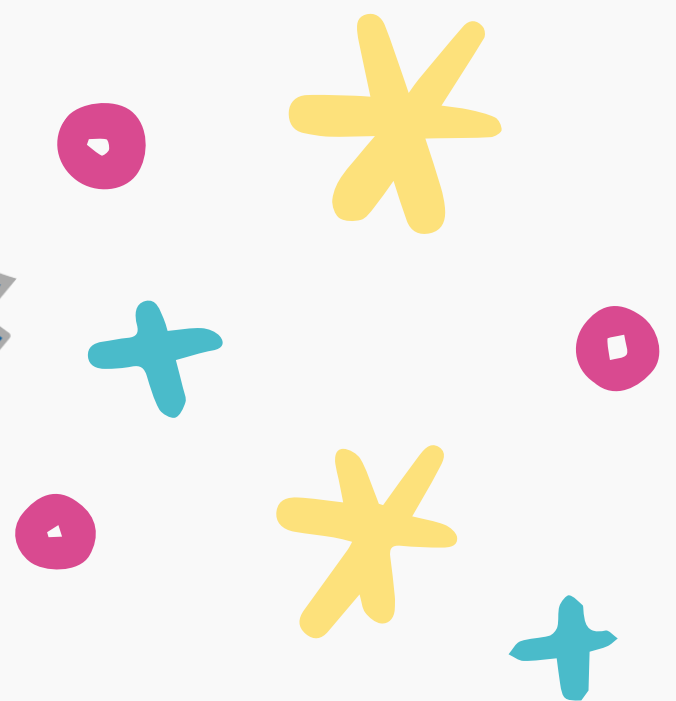
Vice-Principal (T & L): Mrs Catherine Chan [catherine\\_khoo@schools.gov.sg](mailto:catherine_khoo@schools.gov.sg)

*(Staff will not be obligated to respond, either by phone or email, on weekends and beyond 7.00 pm on weekdays, unless it is an emergency)*

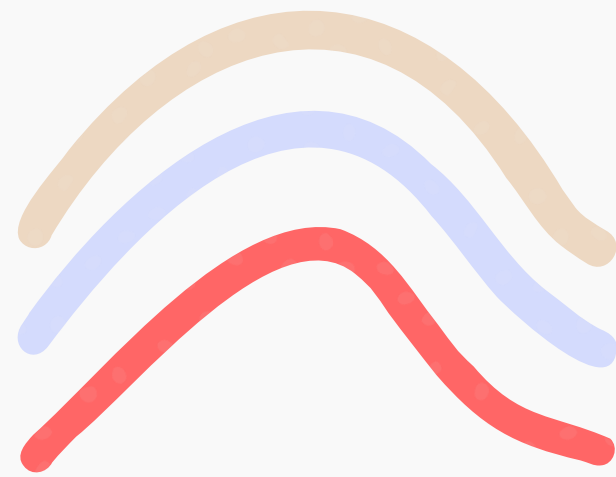


Thank you!






# Sec 3 School Experience

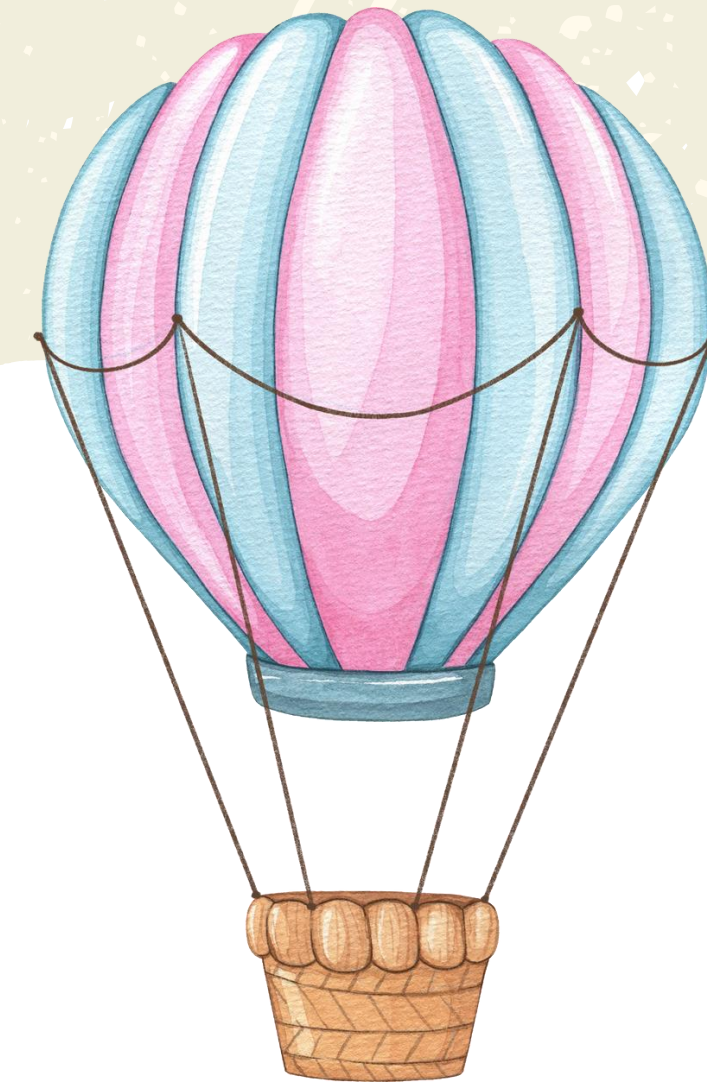




# Start-it-Right



- To set the overall tone and expectations for the school and individual levels
  - To help prepare students' mindsets to approach the year
  - To kick-start the building of good teacher-student and student-student relationships
- 

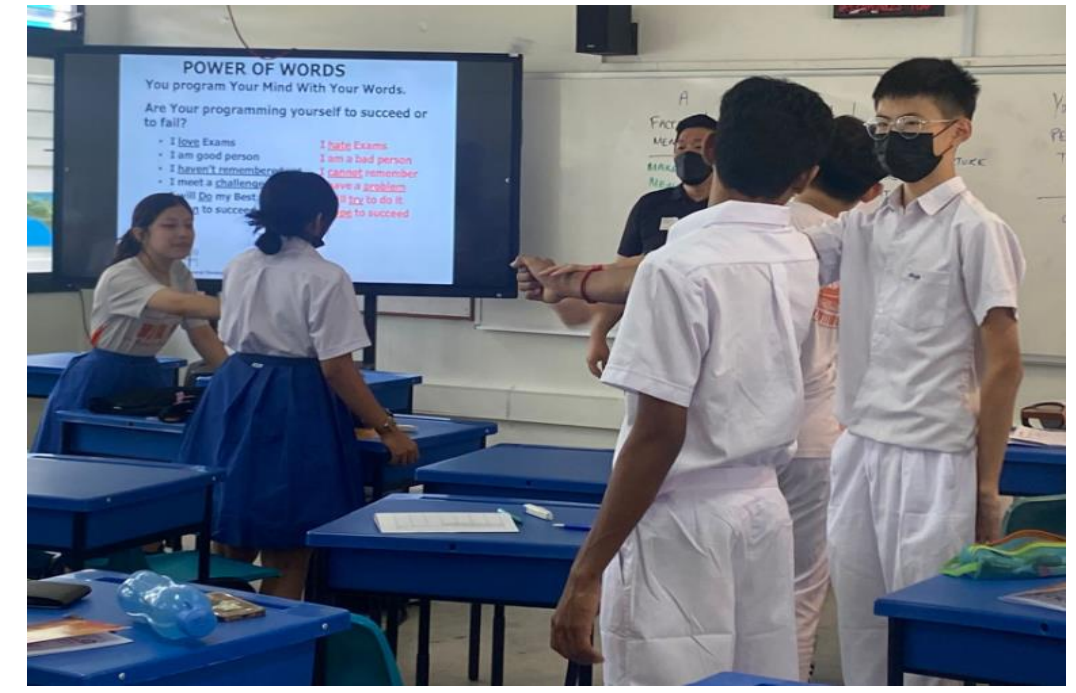




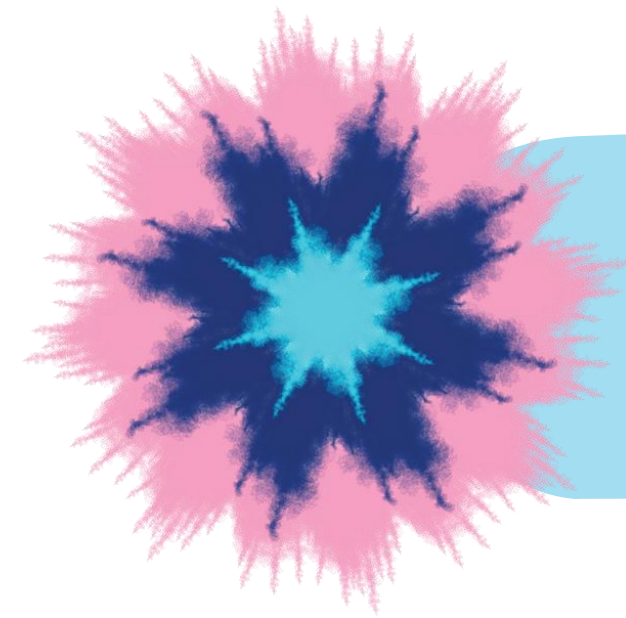


# Self & Time Management Workshop

- Learn strategies to effectively manage time, stress and emotions positively when under timed pressure
- Work within the limited time to achieve their goals
- Learn skills to overcome procrastination



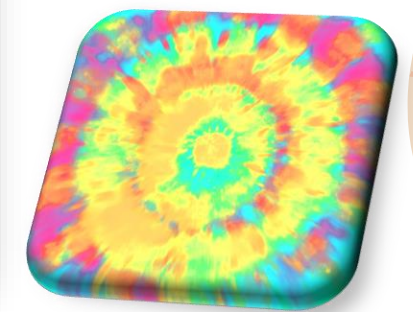




# Tie Dye Activity

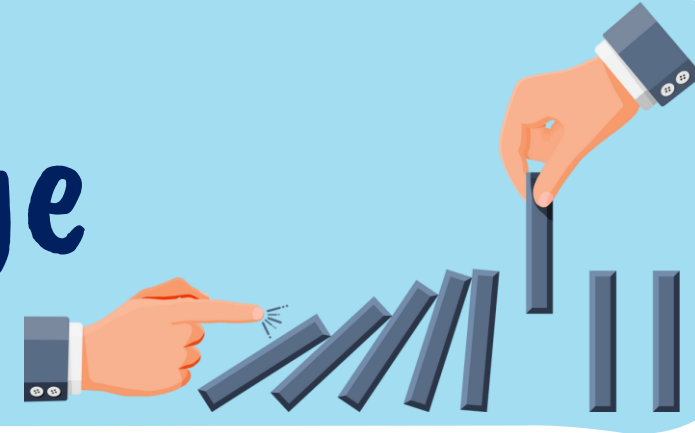


Unleashing creativity and finding self identity with Tie Dye





# Domino Challenge



**Class 21-3E**

- Students to form a domino structure that best represents their class
- Understand the importance of teamwork and patience

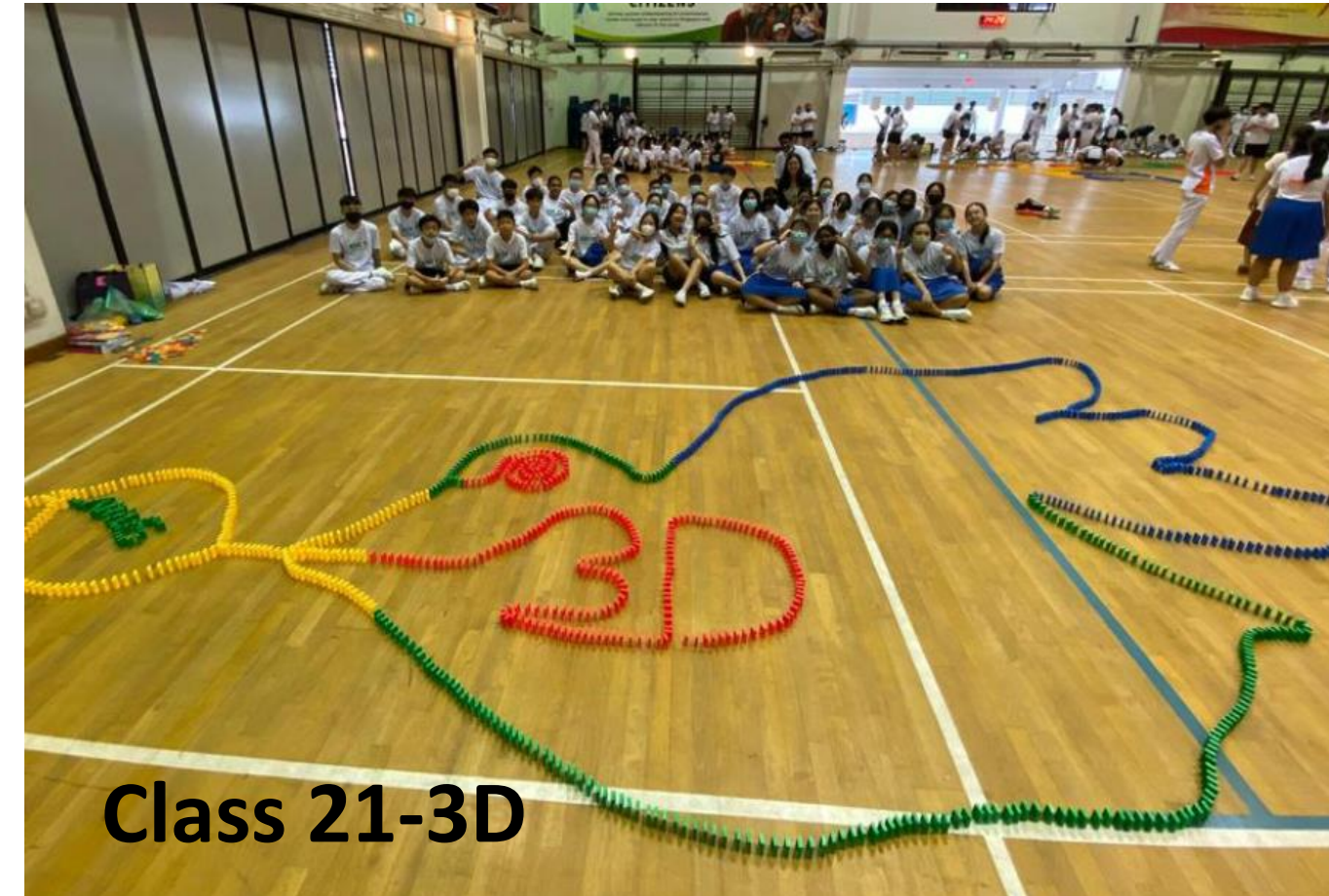


**Class 21-3G**



# Domino Challenge

Students certainly displayed creativity and togetherness



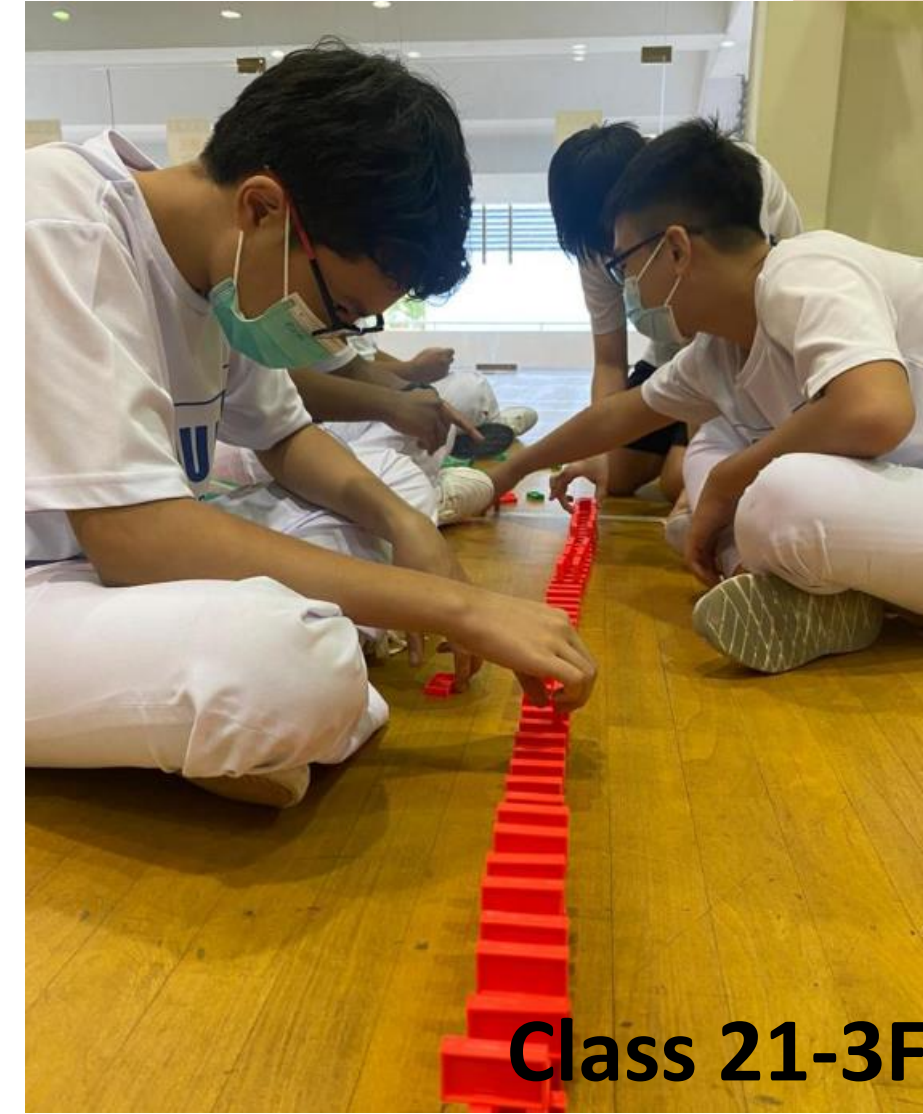
Class 21-3D



Class 21-3B



Class 21-3C



Class 21-3F



Class 21-3A





# Transition From Lower Secondary To Upper Secondary



Challenges faced  
by the child



Subjects with increased academic rigor

New Responsibilities

Emotional & Mental Changes

Encourage & Support

Manage Expectations

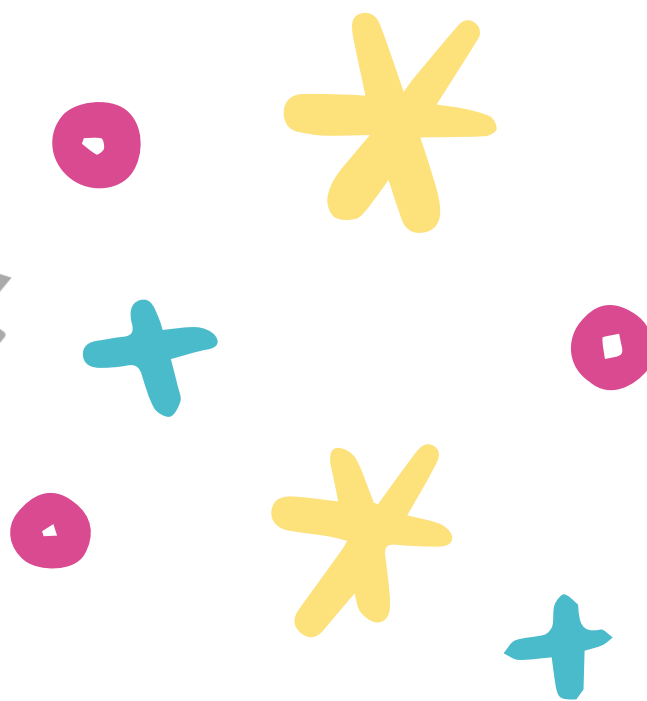
Affirm Efforts & Celebrate Small Successes

Time to Connect

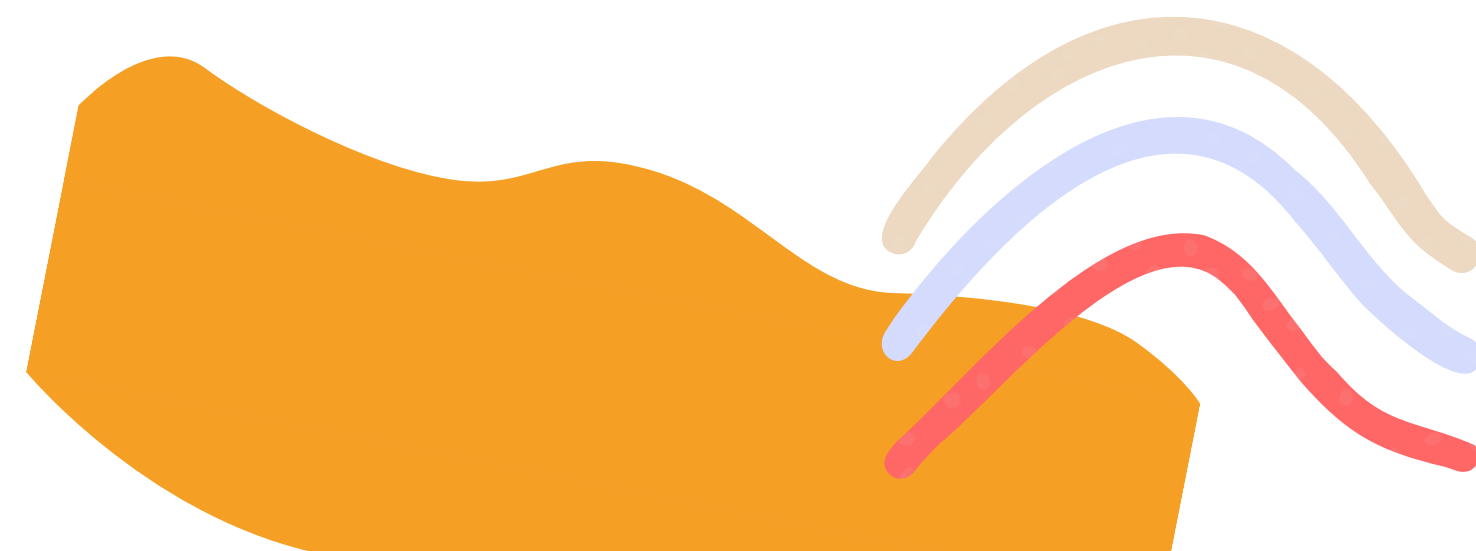
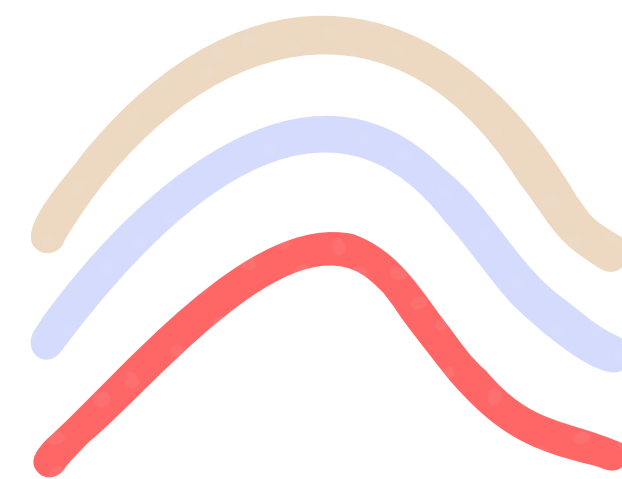


What we can do  
as parents

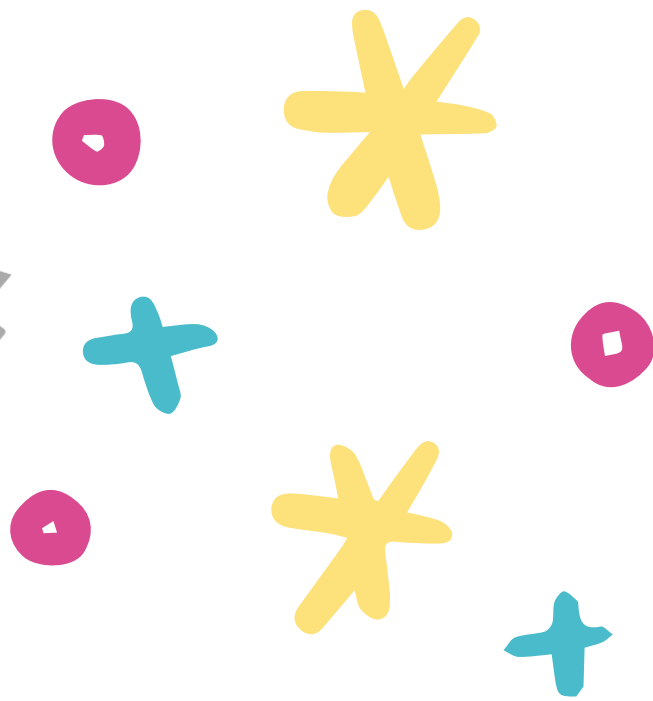




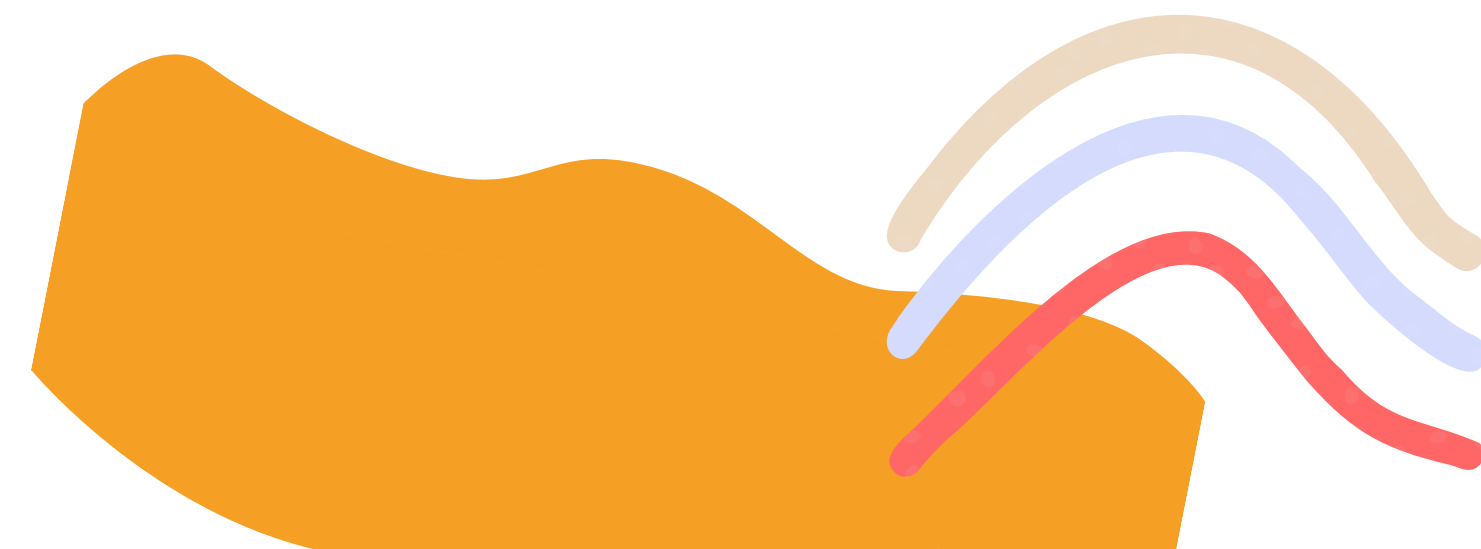
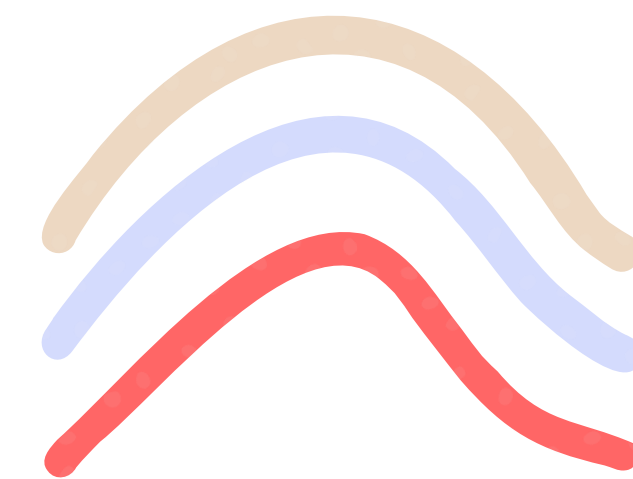
Thank You







# Sec 3 Outdoor Adventure Camp





THE SINGAPORE SCOUT ASSOCIATION

# Hua Yi Secondary School

- Parents Briefing 2023





# Who are we:

Sands Leadership Development Centre  
An initiative of  
The Singapore Scout Association

# Date of Programme:

Wed 22<sup>nd</sup> – Fri 24<sup>th</sup> February

*(Back in school by 1230pm on Fri)*



# Venue:



**Sarimbun Scout Campsite**  
**70 Jalan Bahtera Singapore 719921**

# Programme Objectives

- 01 To provide opportunities for students to resilience through adventure and team building activities, intentionally reinforced during debrief.
- 02 To challenge students to emerge from their comfort zones.
- 03 To allow students to acquire and demonstrate team building and life skills.
- 04 To provide opportunities for class bonding.



# Camp Details - Activities





# Camp Details - Activities





# Camp Details - Accommodations

## 01 Tents



## \* Dorm Blocks *(Only for wet weather)*



## 02 A-Huts





# Camp Details – Challenge by Choice

**01** Challenge by choice does not give the participants the choice to continually opt out of activities because they have chosen not to play.

Some find it easy to understand challenge by choice in the following way:

- Participants have the right to choose when to participate and in what way.
- Participants must add value to their experience at all times. Sitting out is rarely an appropriate option.
- Participants must respect and value the decisions of their peers.

# Camp Details - Meals

- 01 Day 1 – Tea Break, Lunch, Dinner, Supper
- 02 Day 2 – Breakfast, Lunch, Tea Break, Dinner, Supper
- 03 Day 3 – Breakfast

# Camp Details – Packing List

No	Items	Quantity	Remarks
1	School based T-Shirt	Minimum 4	1 Level T-shirt, 1 House T-shirt, 2 other school-based T-shirts (CCA/SL Tee/etc)
2	Track/Long Pants	Minimum 2	Attire throughout camp
3	Shorts	Minimum 2	1 for water activity
4	Undergarments	Minimum 3 sets	
5	Socks	Minimum 2	
6	Shoes for activity	1	Only covered shoes
7	Old shoes / booties for water activity	Minimum 1	Sandals will not be allowed for water activity
8	Sandals / slippers	1	Only to be worn for showering purposes
9	Towel	1	
10	Toiletries	1 Set	Bring female hygiene products if needed and 1 roll of toilet paper for own usage
11	Zip lock / Plastic bag	As required	To keep your wet clothes and waterproofing your items in your bag



# Camp Details – Packing List

No	Items	Quantity	Remarks
12	Utensils	Compulsory	Cups, Plates, Fork & Spoon (For Meals)
13	Water bottle	Compulsory	Minimum 1 litre
14	Personal First Aid Kit / Medication	Compulsory	Bring your inhaler if you are asthmatic
15	Poncho	Compulsory	To bring in case of wet weather
16	Day Bag	Compulsory	Use throughout the camp.
17	Sleeping bag	Compulsory	You will be sleeping overnight at campsite without mattress
18	Hat / cap	1	Optional
19	Insect Repellent	Recommended	
20	Sunblock lotion	Recommended	
21	Spare pair of spectacles / contact lens/ lotion	Recommended	For those who are short-sighted
22	Spectacle hook or band	Recommended	For water activity
23	Torchlight	1	Optional
24	Pen and notepad	1 Set	

# Camp Details – Safety Procedures

01

## Mosquitoes

- Fogging & Larvaciding (Weekly)

02

## Wild Animals

- Facilitators 1<sup>st</sup> in Line
- Pre-Checks before each activity

03

## Dedicated First Aider

04

## Competent Facilitators

- Level 1 Facilitation Course (L1FC) certified
- MOE Eris Registered

# Camp Details – Evacuation Procedures

01

## Non - Emergency

- Parents to pick students up

02

## Emergency (Non Critical - Based on Assessment by First Aider & Camp In Charge)

- Sent to National University Hospital (NUH)

03

## Emergency (Critical – Based on Assessment by First Aider & Camp In Charge)

- Ng Teng Fong General Hospital



# Other Camp Information

01

## Insurance Coverage

- Public liability insurance coverage of up to 3 million for outdoor activities. As well as insurance coverage against permanent disability, death and medical with an excess of \$50.00

02

## Emergency Contact

- During school hours (7am to 6pm) to call school
- After school hours to call 9113 4632





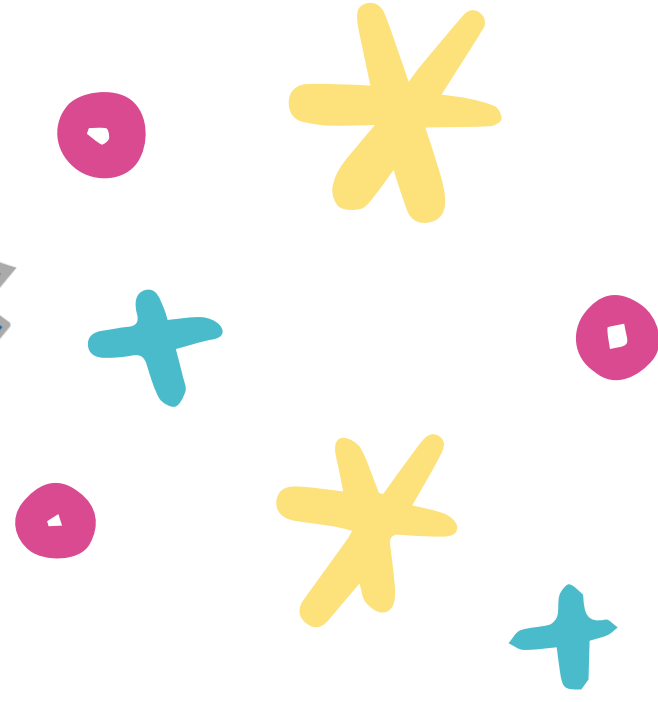
**THANK YOU!**



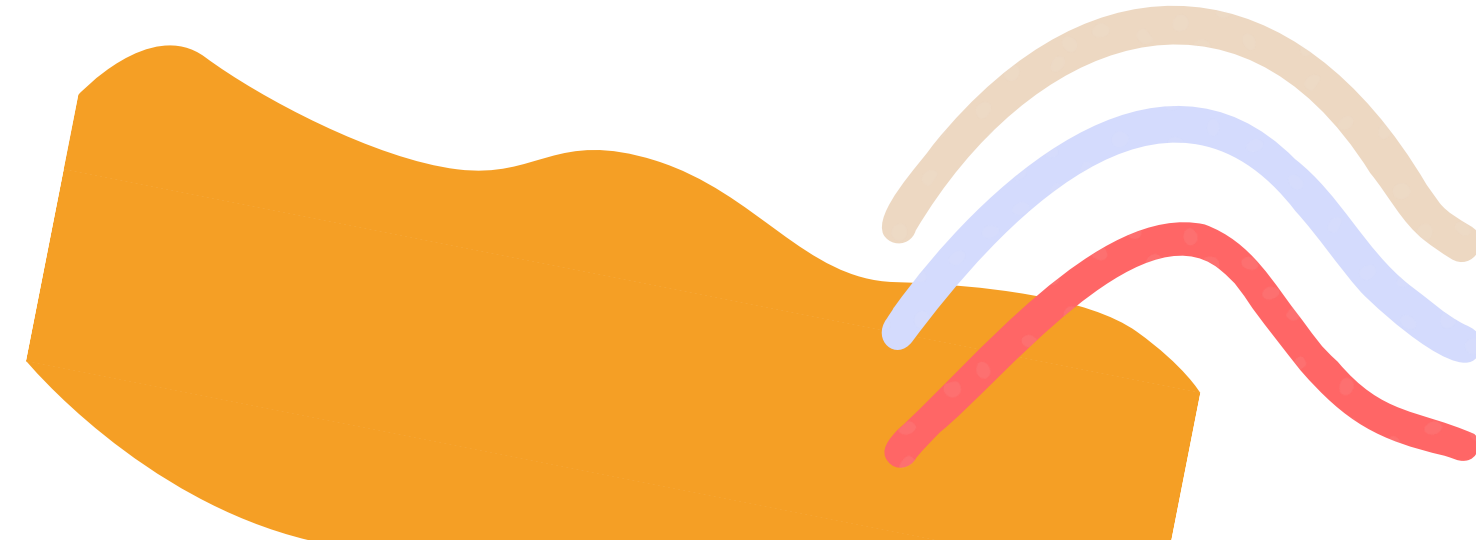
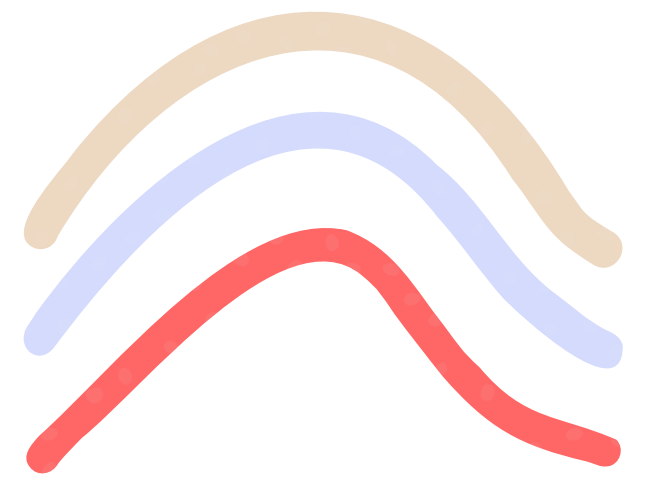
Connect with us

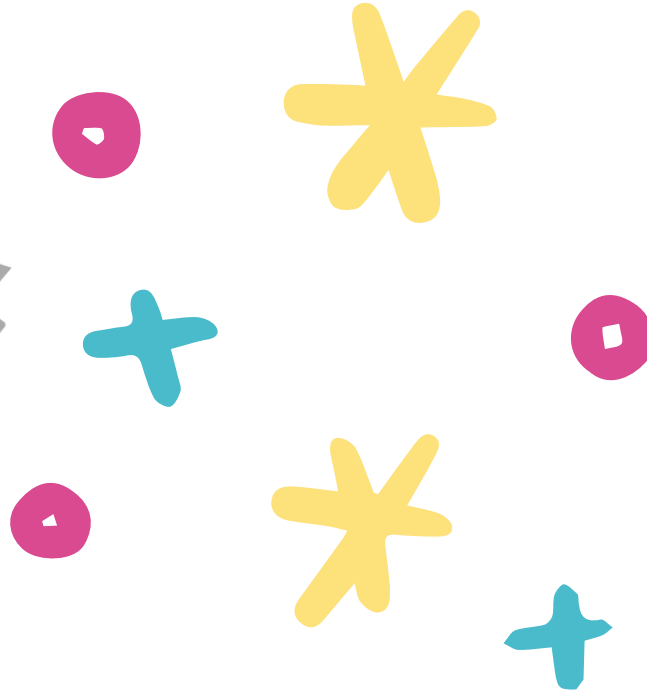
**#SingaporeScout**





# Interaction With Form Teachers





Thank You

